

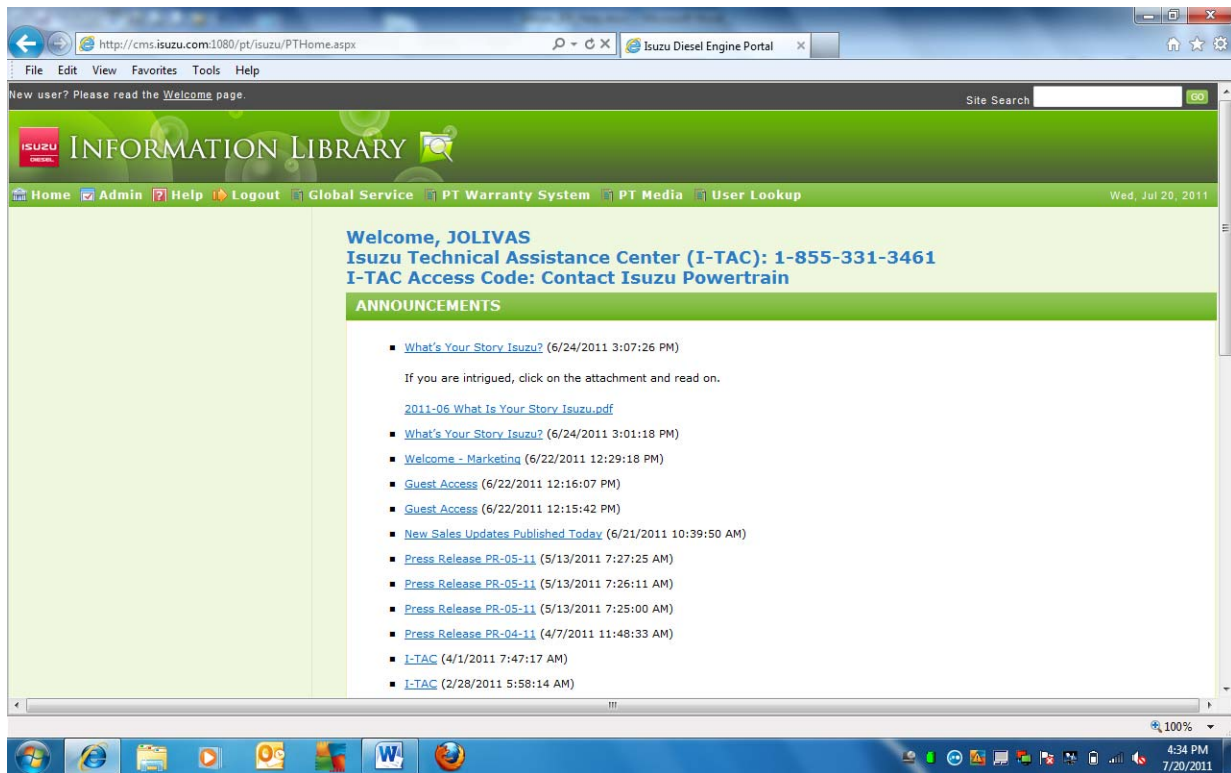
Overview

This guide has been created to assist IE9 users experiencing a blank left navigation menu on the Isuzu Powertrain Information Library (<http://www.isuzuengines-info.com>).

Follow the steps provided below to update your IE9 security settings to resolve the blank left navigation menu errors.

Upon successful login to the Isuzu Powertrain Information Library, some IE9 users experience the following blank left navigation menu errors.

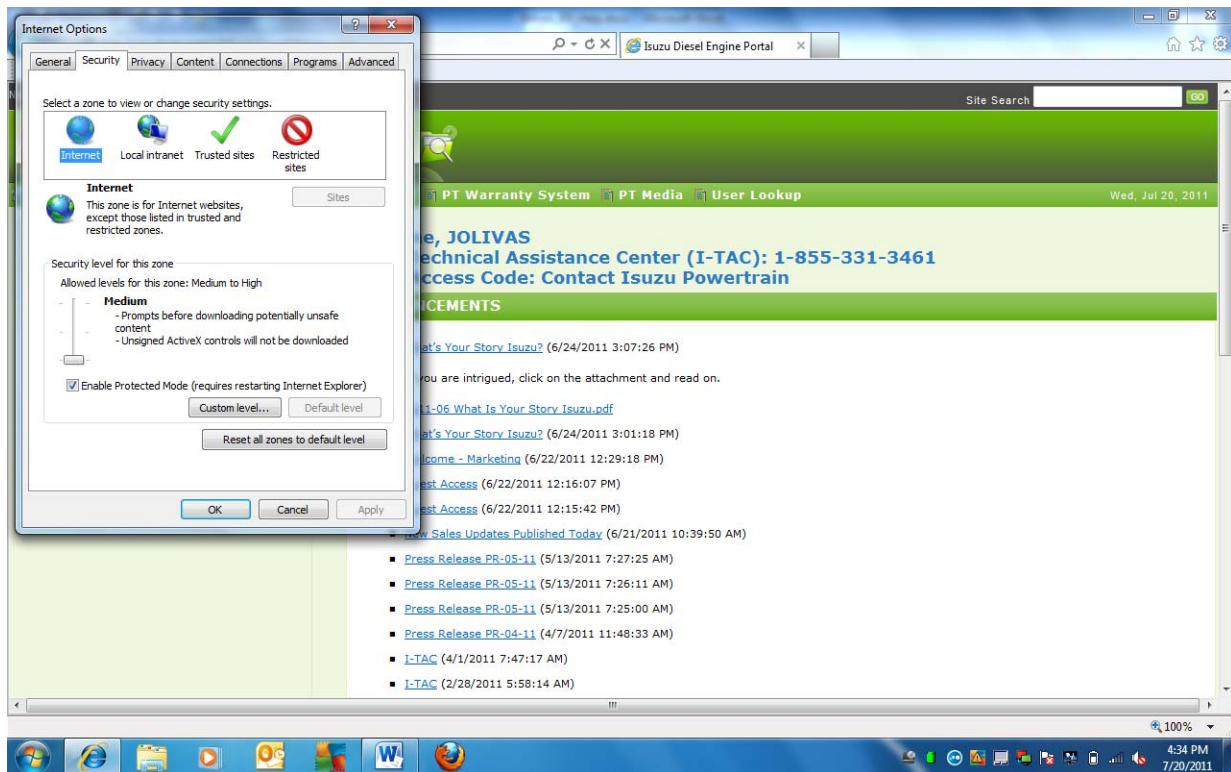
Below is a screenshot illustrating the blank left navigation menu errors on IE9.



NOTE: The website <http://www.isuzuengines-info.com> redirects users to <http://cms.isuzu.com:1080/pt/isuzu/Default.aspx>. If you cannot access the site, please make sure that your network firewall allows access to port 1080.

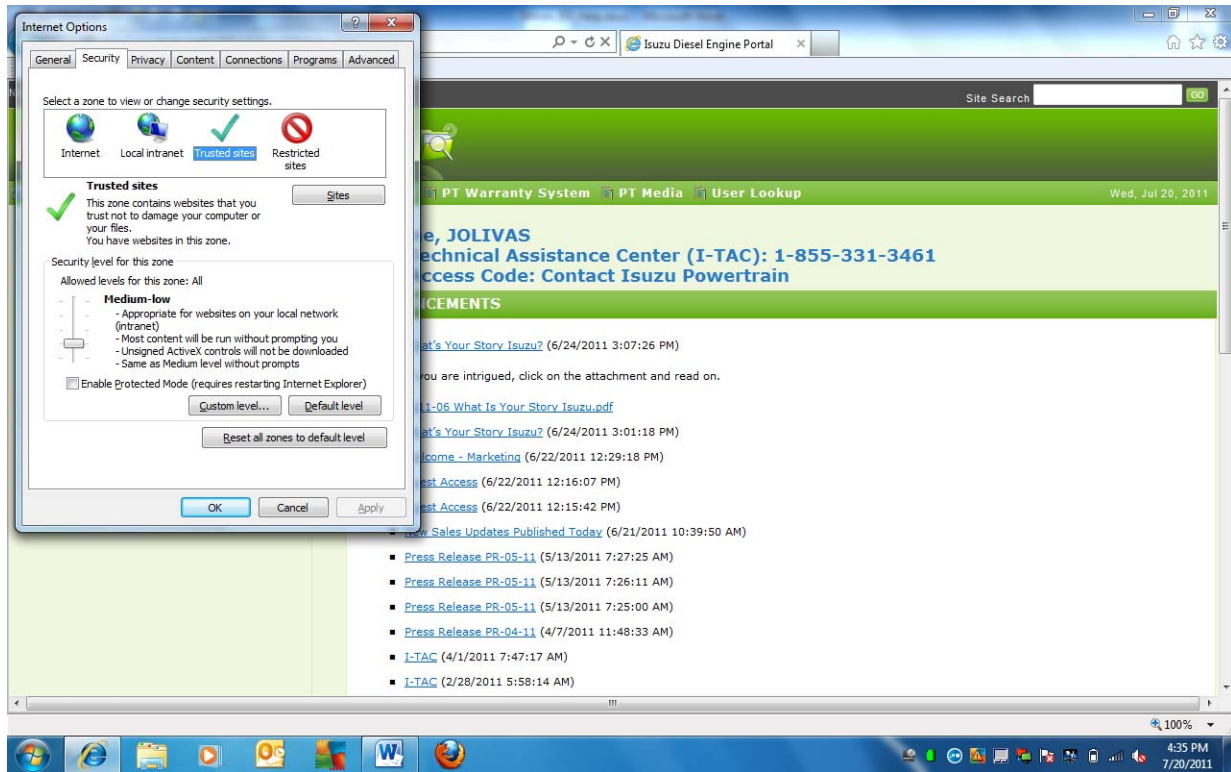
Step 1) Select the menu option Tools → Internet Options to open the Internet Options dialog box.

Step 2) Select the Security tab. Click on the Internet zone icon and set the Security level to Medium.

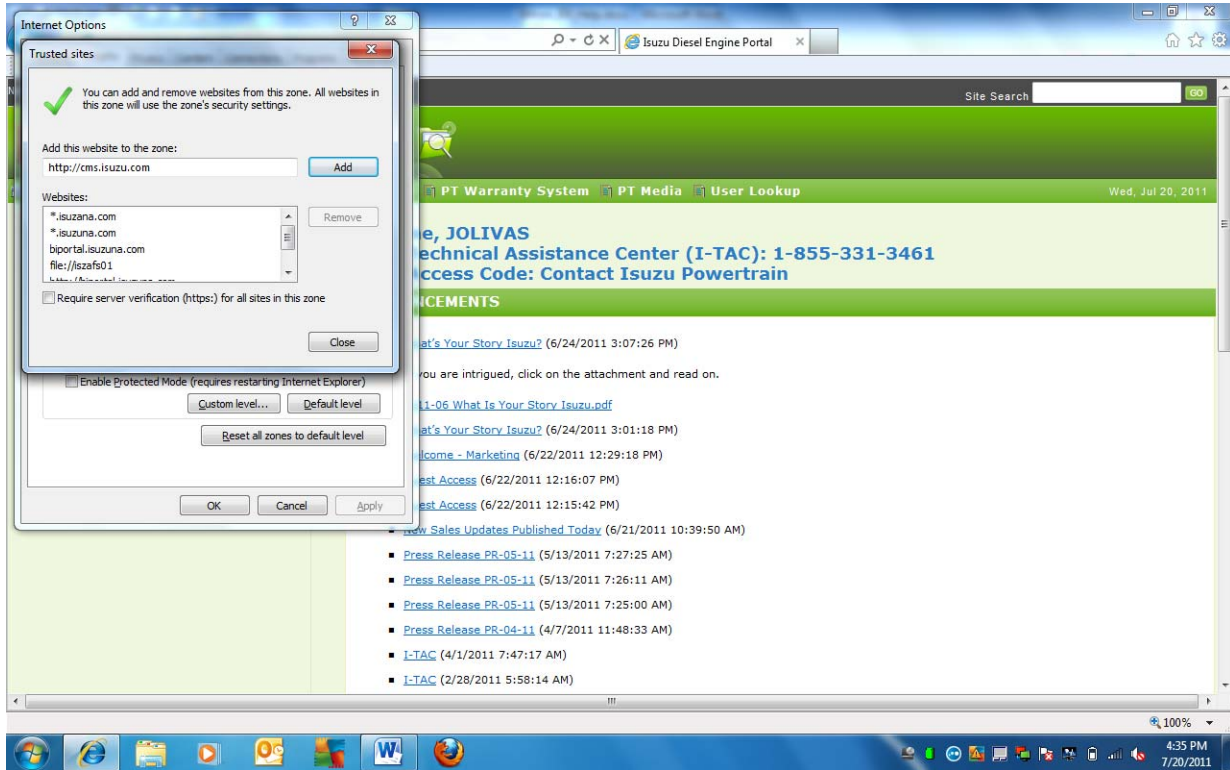


Step 3) Click on the Trusted sites zone icon and set the Security level to Medium-low.

Step 4) Click on the Sites button within the Trusted sites zone.



Step 5) Enter <http://cms.isuzu.com> in the Trusted sites zone then click Add. Once the website has been added click Close. Click Apply then OK to close the Internet Options dialog box.



Step 6) Refresh the webpage for the Isuzu Powertrain Information Library. Confirm that the blank left navigation menu errors on IE9 has been resolved. If the blank left navigation menu errors persist then try closing all IE9 browser windows and open a new IE9 window to access the site once again.

NOTE: The key IE9 Security Setting is to Enable → Script ActiveX controls marked safe for scripting

